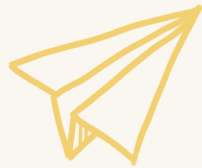


Activity Printing Guide!

If you would like to print out any of the activities and do them on paper follow this guide for printing them!



Colonial Jobs Crossword
(page 10)

Colonial Items Word Unscramble
(page 19)

Guilford Scavenger Hunt
(page 22)

Write a Letter
(page 23)



*Please fill out this attached anonymous
survey!*

This is my senior project, so if you could fill this out I would greatly appreciate it.

link is here



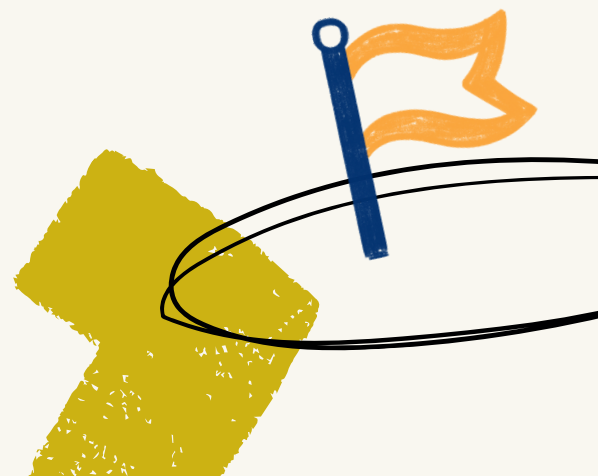
— THE GUILFORD —
KEEPING SOCIETY
— KEY —

The Guilford Keeping Society was founded in January 1947, as the “Old House Group” as following World War II, America shifted its focus towards preserving its history and heritage.

In February of 1947, the name was changed to the “Guilford Keeping Society” as a reference to “keeping rooms”, which are rooms in which people used to gather. The society’s focus moved towards preserving historic homes and sites while also educating people about Guilford’s rich history.

Currently the Guilford Keeping Society holds many fundraisers to support their preservation efforts, including events like wine tastings, workshop classes, and summer camps for children.

The Guilford Keeping Society



GKS Website

The Guilford Keeping Society Website has a lot of resources

Just look up:
"Guilford Keeping Society"
or
www.guilfordkeepingsociety.org



Home page

Here, you can find recent newsletter publications, events, and museum hours.

Photo Archive

Here, you can scroll through the GKS archive of photos. They are categorized based on theme making it very easy to look at exactly what you are looking for.



Virtual Learning Page!

Here, you are able to click on various different links to access some fun learning resources! There are informational videos and links to activities!



Early Guilford Day

A Guilford Tradition

photo from 2007





Early Guilford Day has been a tradition of the Guilford Public School system for decades. It serves as a “living history experience” for Guilford fourth graders to live a day like a person in Colonial Guilford. It is the culminating event after a year-long curriculum of activities related to Early Guilford Life.

Each student has the option to dress in Colonial attire, however it is not required. They participate in activities at the Griswold and Hyland house such as tinsmithing, cross-stitch, basket weaving, hearth cooking, and other traditional colonial activities.

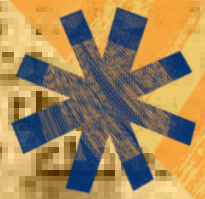


Early Guilford Day has become a cherished tradition over the years, becoming a generational childhood experience. Many adults who had experienced Early Guilford Day in their youth remain in Guilford so that their children are able to enjoy the program as well. CT State Controller Sean Scanlon fondly recalls Early Guilford Day as one of his favorite experiences. Additionally, the Guilford Preservation Alliance interviewed some high schoolers who praised Early Guilford Day as an extremely valuable experience.

The Early Guilford Day program emphasizes hands-on education, making history engaging and memorable for Guilford students.



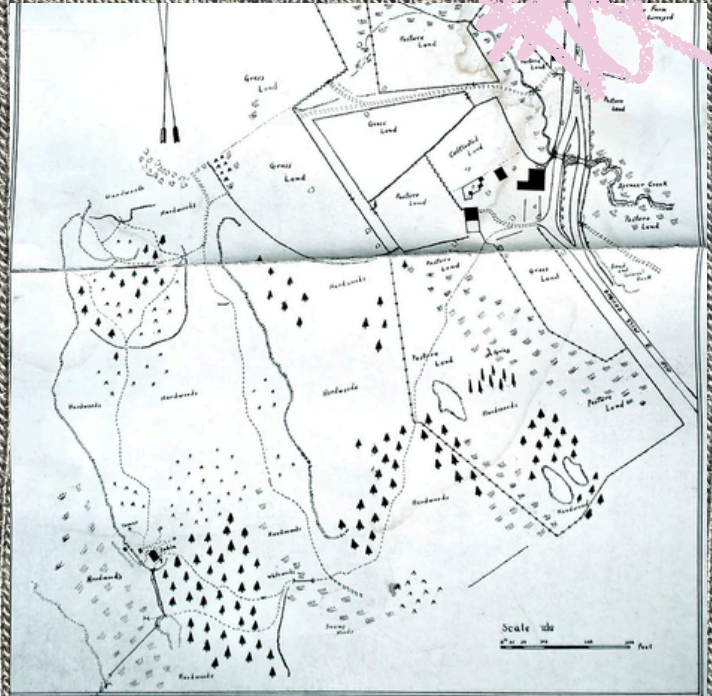
Built by Medad Stone about 1810, as
Street would be extended across the
New Haven. Joel Davis purchased the
remained in the Davis family ever since.



The Medad Stone Tavern

**Located at: 171 Three Mile Course,
Guilford CT 06437**

Built originally in 1803. Acquired by
the Guilford Keeping Society in
2001.



*Medad Stone Tavern (left)
Map of Tavern property drawn by Len Hubbard. 1933 (Right).*

The Medad Stone Tavern was built in 1803 by Medad Stone. The original intent for the building was to serve as a **Tavern** for travelers around the Green to rest at and those driving along the newly rerouted Boston Post Road. Unfortunately, the road was never rerouted thus the tavern did not open. For 200 years following, the Davis family farmed on this expanse of a house and land. Leonard Davis Hubbard **bequeathed** the Tavern to the Guilford Keeping Society in 2001. Since, the Keeping Society has worked to restore the Tavern into a true authentic historical museum. The museum features 14 rooms and 10 fireplaces, as well as a barn, corn crib, and fields. In the basement of the Medad Stone Tavern lies Armisteadville, a hand-crafted miniature colonial village.

Due to its size and excellent hosting areas, the Keeping Society currently runs a majority of their events here. For adults, the Medad Stone Tavern hosts the annual Keeping Society beer and wine tastings. For children, the Keeping Society's annual American Girl camp is hosted here (more information in following pages).

Armisteadville

Located in the basement of the Medad Stone Tavern

Armisteadville is a scale miniature Colonial-era village created by Donald Armistead. It took him over 35 years to make. In order to create authentic and functional parts for the village, Mr. Armistead mastered blacksmithing, carpentry, cooperage, weaving, basket making, and broom making. His creative process including every detail of the village's construction was written in many notebooks. Both the notebook and New Haven Register article about the village are displayed next to it in the Medad Stone Tavern Museum. Armisteadville was donated to the Keeping Society in memory of Mr. Armistead's wife Dorothy Armistead who was a former museum curator.

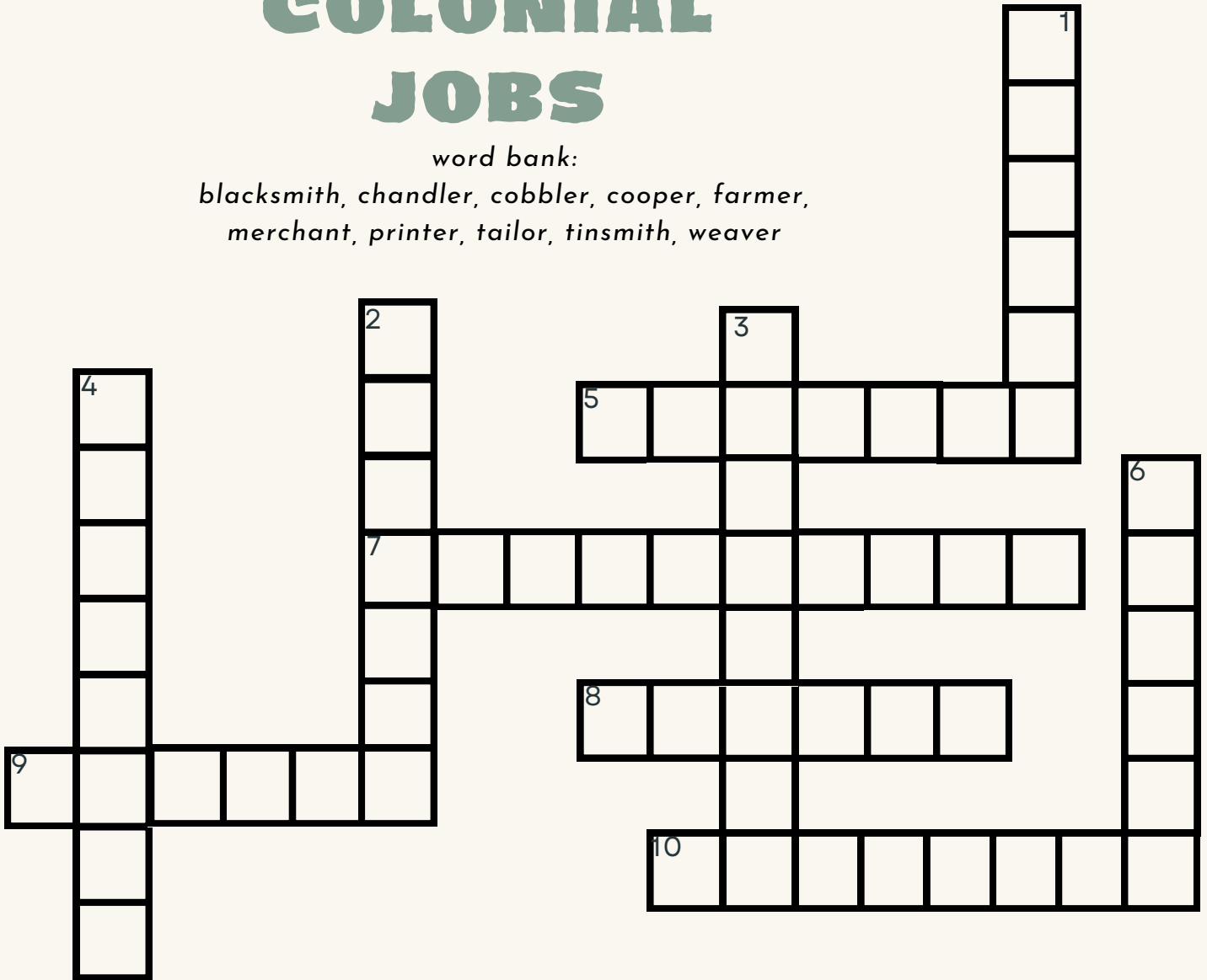


"ARMISTEADVILLE" EARLY AMERICAN CRAFTS VILLAGE
Researched and Modeled by
DONALD A. ARMISTEAD
Given, by him, to the GUILFORD KEEPING SOCIETY
for the ENJOYMENT & EDUCATION of All.
In Memory of Dorothy Y. Armistead
March 2012

COLONIAL JOBS

word bank:

*blacksmith, chandler, cobbler, cooper, farmer,
merchant, printer, tailor, tinsmith, weaver*



Horizontal

5. Prints documents
7. Forges products out of iron or steel
8. Makes and customizes clothing
9. Manages crops to develop agricultural products
10. Makes candles

Vertical

1. Makes barrels
2. Makes shoes
3. Forges products out of tin
4. Buys and trades products on a large scale
6. Create cloth by weaving threads on a loom

The Many Buildings of Armisteadville

A mini-tour



The Cooperage



The Weaving Shop



The Woodworking Shop

Broommaking



The Basketshop

Historical American Girl Doll Camp



The American Girl Doll camp is held annually for one week, typically in July. Every year it is held in the Medad Stone Tavern Museum to allow children to learn history in an historical environment.

Every day the camp focuses on a different historical American Girl doll, the line-up usually changes year to year. The time frames for the dolls range from 1764 for Kaya and her stories as an Indigenous American, 1934 for Kit as she finds light in the Great Depression, and up to 1974 where Julie and Ivy enjoy their childhoods in 70s San Francisco.



The activities for the camp always include a time-period appropriate snack, multiple crafts and games that relate to the time period of the doll, and education regarding the dolls' respective time periods. Additionally, every week ends with a tea party, with the theme changing per the doll.





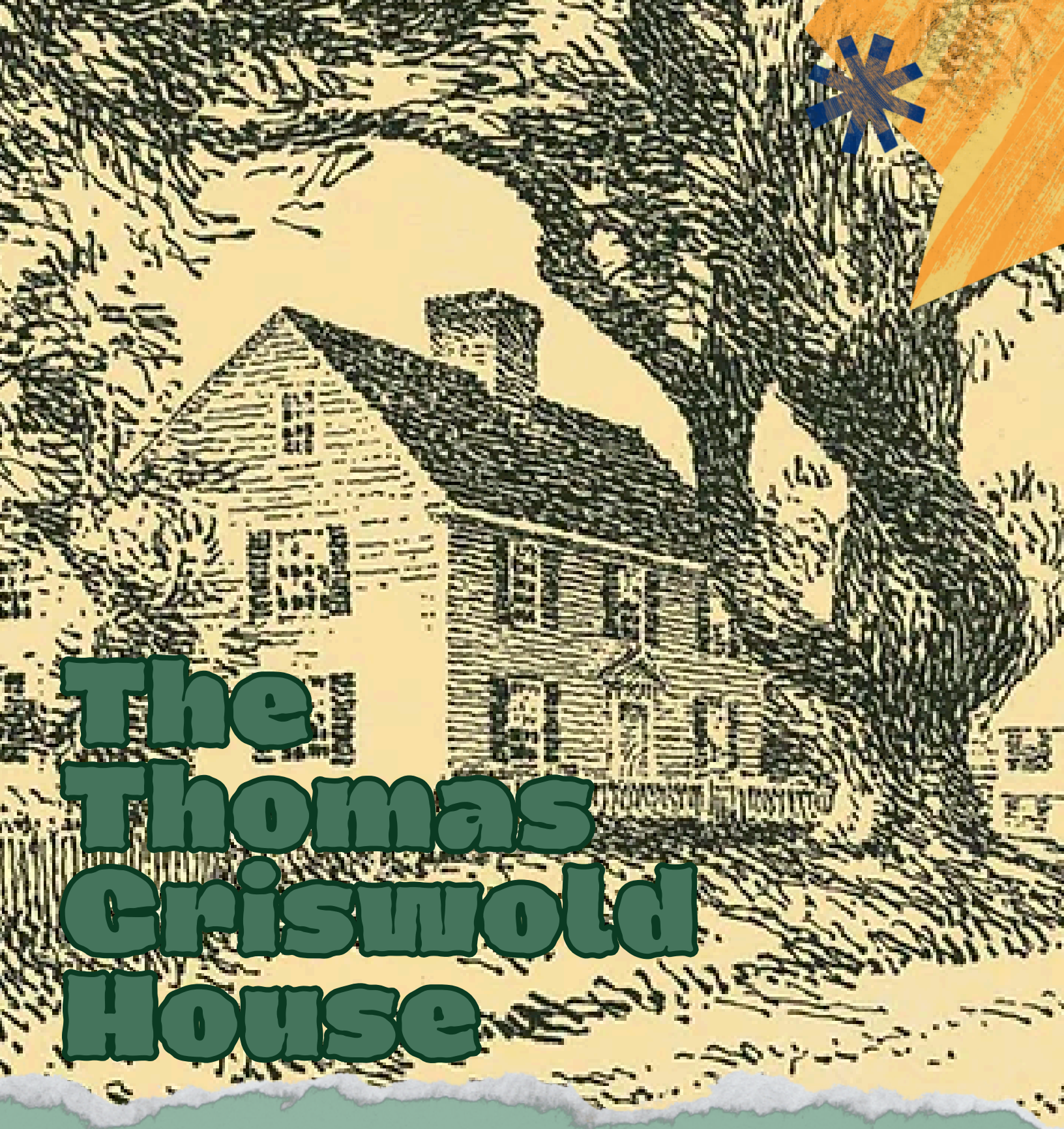
Basket weaving!

**Playing the
Game of
Graces!**



Loom Knitting!





The Thomas Criswold House

Located at: 171 Boston Street, Guilford CT
06437

Built originally in 1764. Acquired by
the Guilford Keeping Society in
1958.



View from Boston Street (left)

Keeping Room (right)

The Thomas Griswold House was built in 1764 by Thomas Griswold III for his two sons John and Ezra. It follows a classic New England saltbox architectural design and overlooks a large field and the scenic Boston Post Road. The property was family land that was acquired in 1695 by Thomas Griswold II. John Griswold Jr. then passed ownership to his cousin George Griswold, and from there, remained ownership by George's descendants until 1958 when it was purchased by the Guilford Keeping Society. Since its purchase by the Keeping Society, it has undergone two major restoration projects in 1974 and 1995 in order to preserve the house in the early 19th-century style to reflect George Griswold's house.

The house contains items originally found within the house such as the parlor mirror and the dressing table. One of the rooms upstairs is used for temporary exhibits which utilize 19th-century clothing, photographs, and items from the Keeping Society collection. Recent exhibits have been Maritime Recreation and 19th-century women's fashion. In the field of the Griswold house, the Keeping Society hosts its annual fundraiser tag-sale. Additionally, every year the week-long Colonial Camp is held here in which children are given the opportunity to participate in a week's worth of lessons and activities reflective of Colonial times. The Griswold House is also one of the locations that Guilford fourth graders will go to for Early Guilford Day.



Colonial Camp

Colonial Camp is held annually for one week, typically in August. Every year it is held at the Thomas Griswold House Museum to allow children to immerse themselves and their learning in an authentic environment.

Every day the camp focuses on a different aspect of a colonial child's everyday life. Some theme examples include school, chores, farms, and a fan-favorite pirate day.

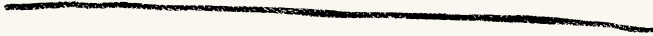


The activities for the camp always include an on theme and time-period appropriate snack, multiple crafts and games that relate to the daily theme, and education (including artifacts) regarding the daily theme. Every year a volunteer blacksmith comes in to show campers a blacksmithing workshop. Additionally, every week ends with a walking field trip to the Whitfield house.

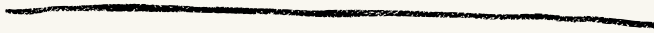




Playing Hoop and Stick (a Colonial game) in the field!



Scavenger Hunt at the Whitfield House!



Making Colonial Spoon Dolls!

COLONIAL ITEMS WORD UNSCRAMBLE

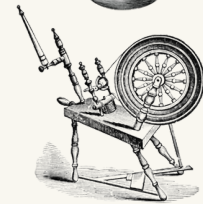
rutetr nrbhu



ortrma nad lstepe



npinnsgi hewel



omol



tesakb



dalcen



deb rmwera



rnoc uskh dllo



icraefple



VOCAB WORDS

Tavern: a place for townspeople to eat, discuss business, stay warm, trade, and catch up on the news.

Bequeathed: leave an estate to a person by beneficiary or will

**MORE FUN
ACTIVITIES!**

COLONIAL GUILFORD SCAVENGER HUNT

Visit the Guilford Green
and find a historical
house placard



Visit the Griswold
House and find a tool
made by a blacksmith



Visit the Medad Stone
Tavern and look at the
stencling



Go to the Green and
find a leaf and figure
out what kind of tree its
from



WRITE A LETTER TO A HISTORICAL FIGURE:

Ask questions comparing your life to their's, tell them about modern life, think about what you would have done in the Colonial Guilford Era

Dear:

From:

**THANK YOU TO PAT
LOVELACE OF THE
CUILFORD KEEPING
SOCIETY FOR MENTORING
ME THROUGH THIS
PROJECT, YOUR HELP
THROUGHOUT THE YEARS,
AND THE SERVICE YOU DO
FOR THE COMMUNITY. IT IS
CREATLY APPRECIATED.
ADDITIONAL THANKS TO
THE CUILFORD KEEPING
SOCIETY FOR ALLOWING
THE USE OF THEIR PHOTOS
FROM THEIR
WEBSITE/FACEBOOK FOR
USE IN THIS MACAZINE.**



THIS MAGAZINE WAS CREATED BY LUCI BRECHLIN
(SENIOR CLASS OF 2025)